

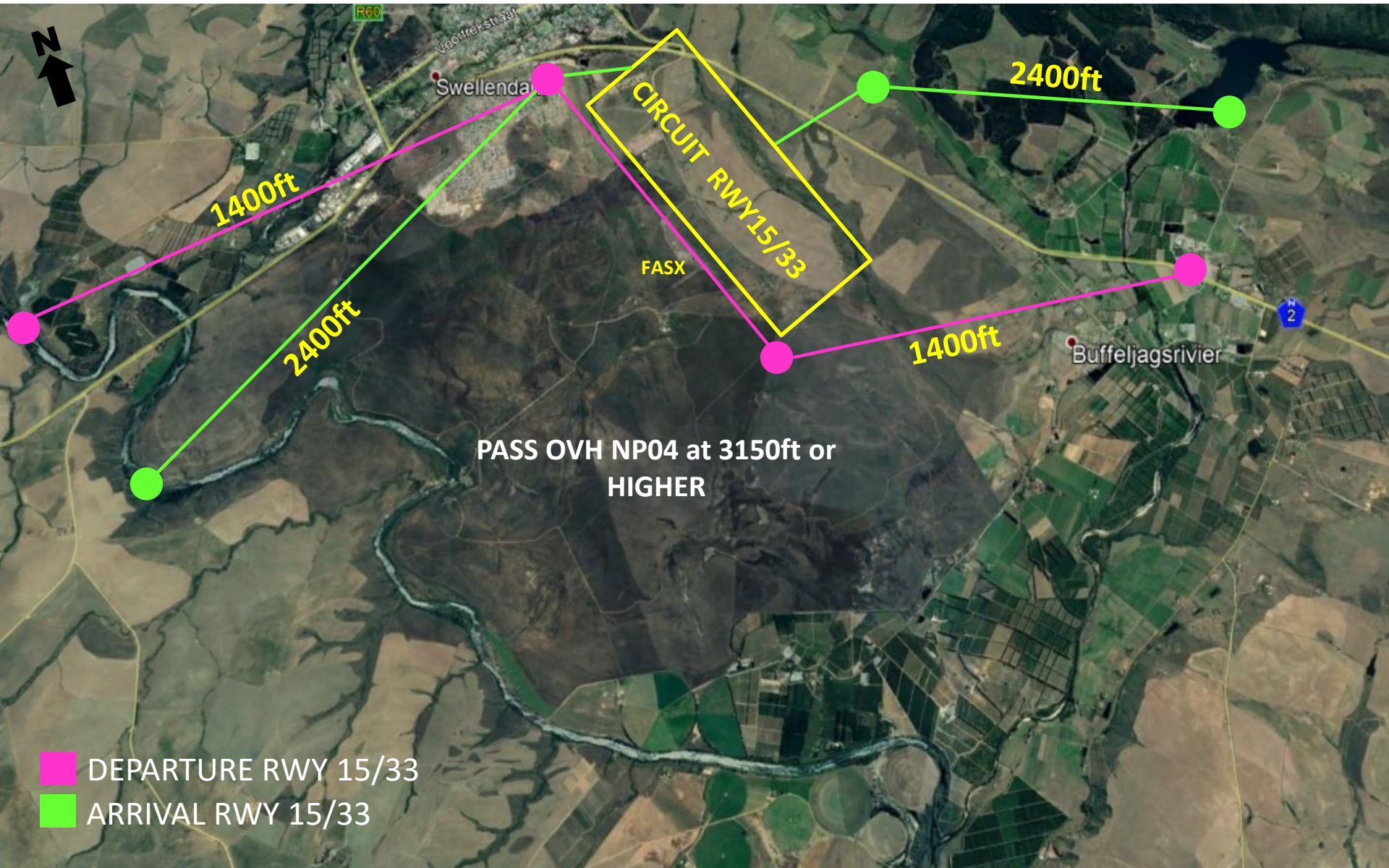
VFR Departure/Arrival FASX

Departure: Take-Off RWY15 → Turn Left when safe, climb 1500ft route Buffelsjags BP → Climb as required, report intentions to the East.

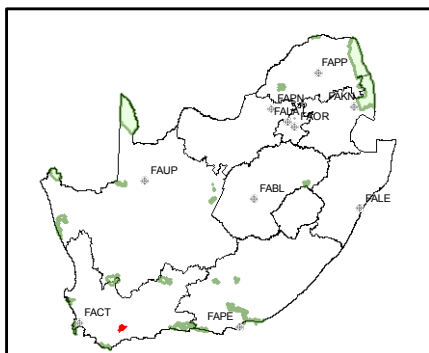
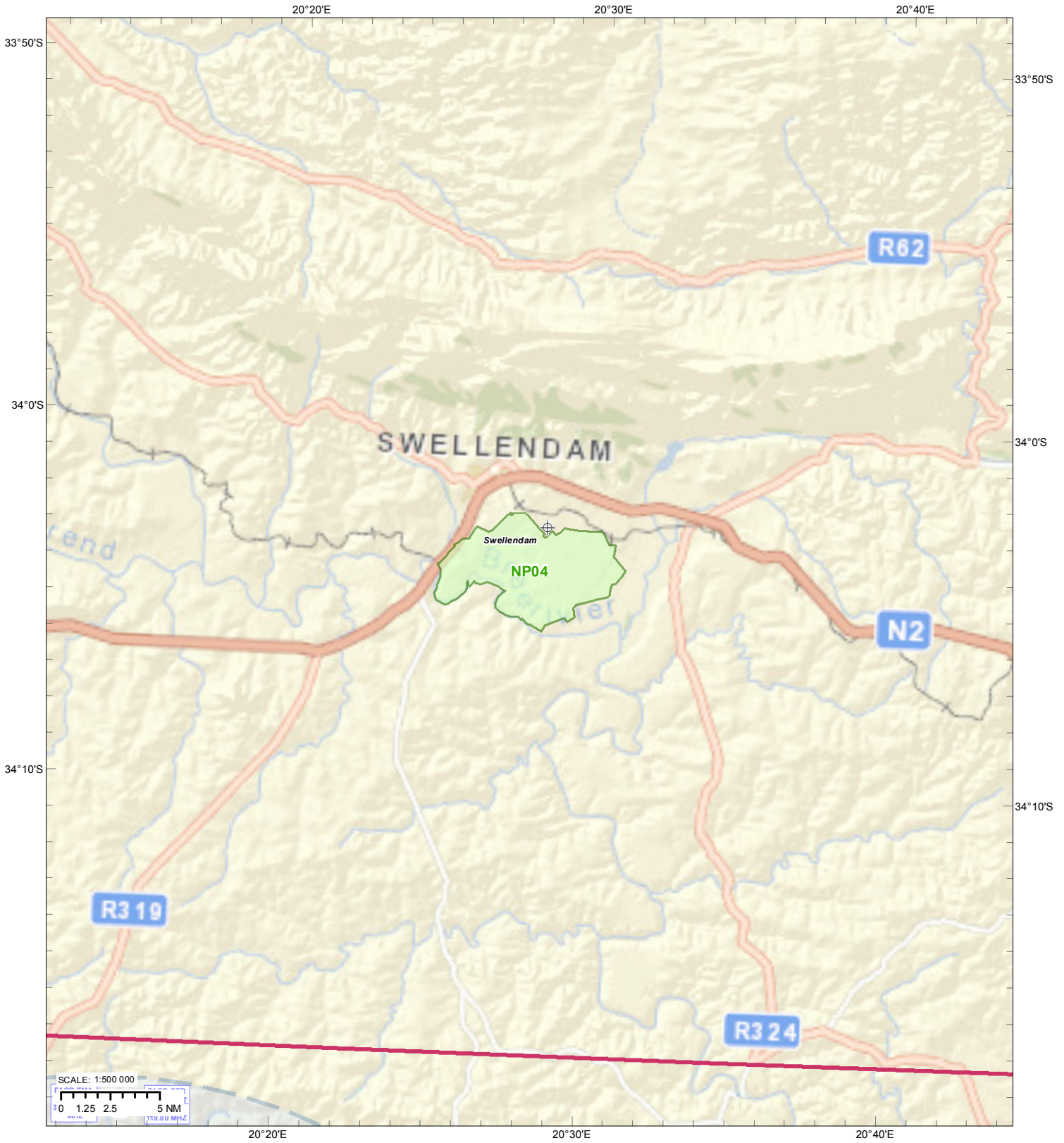
Departure: Take-Off RWY33 → Continue Upwind to Railton, climb 1500ft route to Silo's → Climb as required passing Breede-river, report intentions to the West.

Arrival: East → Inbound to airfield at 2400ft to Buffelsjags Dam. Route and report intentions, position to overfly field at mid-downwind 15/33. Comply with standard joining pattern. AVOID NP04

Arrival: West → Inbound to field at 2400 ft. to Riverbend. Route via Weigh-bridge to Railton, position to overfly field at 2400ft from the North. Comply with standard joining pattern. AVOID NP04



NATIONAL PARKS
Bontebok National Park



NP Nr	Name	Highest Point (ft)	NEMPAA (ft)	MNM ALT (ft)
NP04	Bontebok National Park	650	2500	3150

SOURCE: SAPAD_OR_2014_02

